

AutoCAD[®] 2004

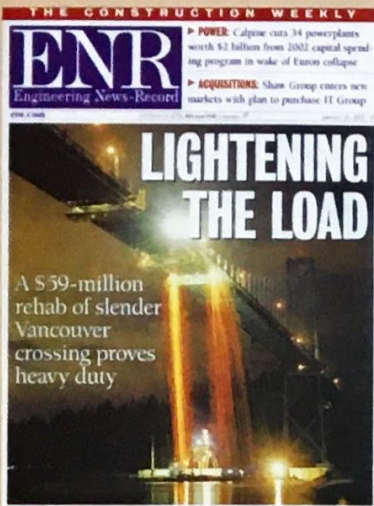
Companion

Essentials of AutoCAD
Plus Solid Modeling

autodesk[®]
authorized publisher

McGraw-Hill DONATION NOT FOR RESALE
2005AS006

James A. LEACH



Student

Please enter my subscription for **Engineering News-Record**.

6 months \$29.50 (Domestic)

Name

Address

City

State

Zip

Payment enclosed

Bill me later

McGraw Hill
CONSTRUCTION **ENR**
5EN2DMHE

Friendly

Please enter my subscription for **Architectural Record**.

6 months \$19.50 (Domestic)

Name

Address

City

State

Zip

Payment enclosed

Bill me later

McGraw Hill
CONSTRUCTION Architectural
Record 5AR2DMHE

Savings

Please enter my subscription for **Aviation Week & Space Technology**.

6 months \$29.95 (Domestic)

Name

Address

City

State

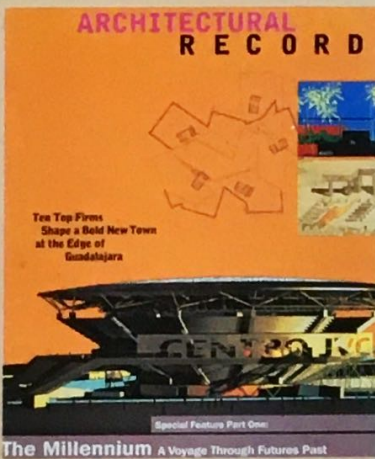
Zip

Payment enclosed

Bill me later

AVIATION WEEK
WEEK & **SPACE**
TECHNOLOGY
www.AviationNow.com/awst

CAW34EDU





NO POSTAGE
NECESSARY
IF MAILED
IN THE
UNITED STATES

BUSINESS REPLY MAIL
FIRST-CLASS MAIL PERMIT NO. 42 HIGHTSTOWN NJ

POSTAGE WILL BE PAID BY ADDRESSEE

SUBSCRIPTION DEPT
McGraw Hill
CONSTRUCTION ENR
PO BOX 516
HIGHTSTOWN NJ 08520-9467



NO POSTAGE
NECESSARY
IF MAILED
IN THE
UNITED STATES

BUSINESS REPLY MAIL
FIRST-CLASS MAIL PERMIT NO. 42 HIGHTSTOWN NJ

POSTAGE WILL BE PAID BY ADDRESSEE

McGraw Hill
CONSTRUCTION Architectural
Record
PO BOX 564
HIGHTSTOWN NJ 08520-9890

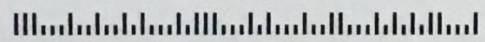


NO POSTAGE
NECESSARY
IF MAILED
IN THE
UNITED STATES

BUSINESS REPLY MAIL
FIRST-CLASS MAIL PERMIT NO. 42 HIGHTSTOWN, NJ

POSTAGE WILL BE PAID BY ADDRESSEE

AVIATION WEEK
WEEK & SPACE TECHNOLOGY
PO BOX 503
HIGHTSTOWN NJ 08520-9475



Stay on top
of industry
developments
with the
leading
publications
in your
engineering field.

Today's economy
requires a
higher level
of knowledge
and adaptability—
increase yours
with

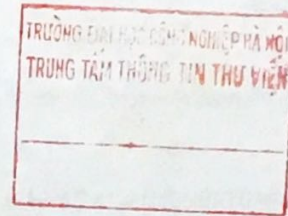
**McGraw-Hill
Construction
and Aviation
Week & Space
Technology:**

*Engineering
News-Record,
Architectural
Record,
and
Aviation Week.*

www.construction.com
www.AviationNow.com/aw

AutoCAD[®] 2004 Companion

Essentials of AutoCAD
Plus Solid Modeling



James A. LEACH
University of Louisville

GIFT OF THE ASIA FOUNDATION
NOT FOR RE-SALE
QUÀ TẶNG CỦA QUỸ CHÂU Á
KHÔNG ĐƯỢC BÁN LẠI



Higher Education

Boston Burr Ridge, IL Dubuque, IA Madison, WI New York San Francisco St. Louis
Bangkok Bogotá Caracas Kuala Lumpur Lisbon London Madrid Mexico City
Milan Montreal New Delhi Santiago Seoul Singapore Sydney Taipei Toronto

The McGraw-Hill Companies



Higher Education

AUTOCAD 2004 COMPANION: ESSENTIALS OF AUTOCAD PLUS SOLID MODELING

Published by McGraw-Hill, a business unit of The McGraw-Hill Companies, Inc., 1221 Avenue of the Americas, New York, NY 10020. Copyright © 2005 by The McGraw-Hill Companies, Inc. All rights reserved. No part of this publication may be reproduced or distributed in any form or by any means, or stored in a database or retrieval system, without the prior written consent of The McGraw-Hill Companies, Inc., including, but not limited to, in any network or other electronic storage or transmission, or broadcast for distance learning.

Some ancillaries, including electronic and print components, may not be available to customers outside the United States.



This book is printed on recycled, acid-free paper containing 10% postconsumer waste.

1 2 3 4 5 6 7 8 9 0 QPD/QPD 0 9 8 7 6 5 4 3

ISBN 0-07-293683-5

Publisher: *Elizabeth A. Jones*

Senior sponsoring editor: *Suzanne Jeans*

Developmental editor: *Lisa Kalner Williams*

Marketing manager: *Dawn R. Bercier*

Senior project manager: *Kay J. Brimeyer*

Lead production supervisor: *Sandy Ludovissy*

Lead media project manager: *Audrey A. Reiter*

Senior media technology producer: *Eric A. Weber*

Senior designer: *David W. Hash*

Cover photo: ©*Jose Fuste Raga/Corbis*

Page layout specialist: *William Scammell*

Typeface: *10.5/12 Times Roman*

Printer: *Quebecor World Dubuque, IA*

The McGraw-Hill Graphics Series

Providing you with the highest quality textbooks that meet your changing needs requires feedback, improvement, and revision. The team of authors and McGraw-Hill are committed to this effort. We invite you to become part of our team by offering your wishes, suggestions, and comments for future editions and new products and texts.

Please mail or fax your comments to: James A. Leach
c/o McGraw-Hill Higher Education
Engineering Department
420 Boylston St., 2nd Fl.
Boston, MA 02116
FAX: 617-867-9849

Titles in the McGraw-Hill Graphics Series

Consulting Editor
Gary R. Bertoline, Purdue University

Bertoline, *Graphic Drawing Workbook*
Bertoline, *Introduction to Graphics Communications for Engineers*
Bertoline/Wiebe, *Fundamentals of Graphics Communication*
Bertoline/Wiebe, *Technical Graphics Communication*
Condoor, *Mechanical Design Modeling Using Pro/Engineer*
Duff/Maxson, *The Complete Technical Illustrator*
Jensen, *Engineering Drawing and Design*
Kelley, *Pro/Engineer Assistant*
Kelley, *Pro/Engineer Instructor*
Leach, *AutoCAD Assistant*
Leach, *AutoCAD Companion*
Leach, *AutoCAD Instructor*
Leake, *Autodesk Inventor*
Lieu, *Graphics Interactive CD-ROM*
SDRC, *I-DEAS Student Guide*
Tickoo, *Mechanical Desktop Instructor*
Wohlrs, *Applying AutoCAD*

DEDICATION

This book is written in memory of Michael E. Hayes, August 28, 1972–July 4, 2003. Mike was a dedicated student and engineer who approached life with a smile and a willingness to learn.

TABLE OF CONTENTS

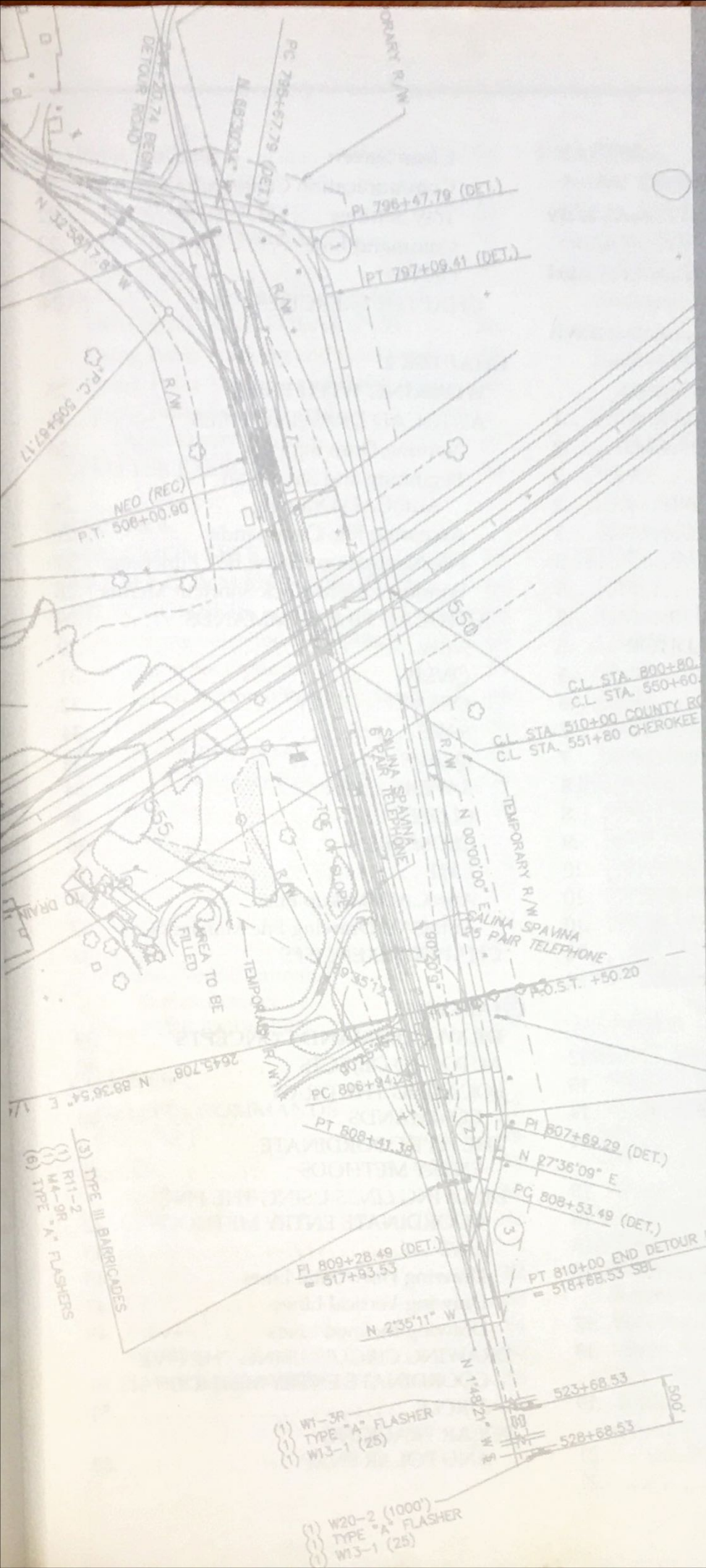


TABLE OF CONTENTS

| | |
|--|-------|
| GUIDED TOUR | xv |
| PREFACE | xxi |
| INTRODUCTION | xxvii |
| CHAPTER 1. | |
| GETTING STARTED | 1 |
| CONCEPTS | 2 |
| Coordinate Systems | 2 |
| The CAD Database | 3 |
| Angles in AutoCAD | 3 |
| Draw True Size | 3 |
| Plot to Scale | 5 |
| STARTING AUTOCAD | 5 |
| THE AUTOCAD DRAWING EDITOR | 5 |
| The <i>Startup</i> Dialog Box | 5 |
| Graphics Area | 6 |
| Command Line | 7 |
| Toolbars | 7 |
| Pull-down Menus | 8 |
| Screen (Side) Menu | 8 |
| Dialog Boxes | 9 |
| Status Bar | 10 |
| Coordinate Display (<i>Coords</i>) | 10 |
| Digitizing Tablet Menu | 10 |
| COMMAND ENTRY | 12 |
| Methods for Entering Commands | 12 |
| Using the "Command Tables" | |
| in This Book to Locate | |
| a Particular Command | 12 |
| Shortcut Menus | 13 |
| Mouse and Digitizing Puck Buttons | 14 |
| Function Keys | 14 |
| Control Key Sequences | |
| (Accelerator Keys) | 15 |
| Special Key Functions | 15 |
| Drawing Aids | 15 |
| AutoCAD Text Window (F2) | 17 |
| Commands When Multiple | |
| Drawings Are Open | 17 |
| Model Tab and Layout Tabs | 18 |
| COMMAND ENTRY | |
| METHODS PRACTICE | 19 |
| CUSTOMIZING THE | |
| AUTOCAD SCREEN | 21 |
| Toolbars | 21 |
| Clean Screen | 22 |
| Communication Center | 22 |
| Tray Settings | 22 |
| Command Line | 23 |
| Options | 23 |
| CHAPTER EXERCISES | 24 |
| CHAPTER 2. | |
| WORKING WITH FILES | 25 |
| AUTOCAD DRAWING FILES | 26 |
| Naming Drawing Files | 26 |
| Beginning and Saving an | |
| AutoCAD Drawing | 26 |
| Accessing File Commands | 26 |
| File Navigation Dialog Box Functions | 27 |
| Windows Right-Click Shortcut Menus | 28 |
| AUTOCAD FILE COMMANDS | 29 |
| NEW | 29 |
| QNEW | 31 |
| OPEN | 32 |
| SAVE | 34 |
| QSAVE | 34 |
| SAVEAS | 34 |
| CLOSE | 36 |
| CLOSEALL | 36 |
| EXIT | 36 |
| AutoCAD Backup Files | 37 |
| AutoCAD Drawing File Management | 37 |
| CHAPTER EXERCISES | 37 |
| CHAPTER 3. | |
| DRAW COMMAND CONCEPTS | 39 |
| AUTOCAD OBJECTS | 40 |
| LOCATING THE DRAW | |
| COMMANDS | 40 |
| THE FIVE COORDINATE | |
| ENTRY METHODS | 41 |
| DRAWING LINES USING THE FIVE | |
| COORDINATE ENTRY METHODS | 42 |
| LINE | 43 |
| Drawing Horizontal Lines | 43 |
| Drawing Vertical Lines | 47 |
| Drawing Inclined Lines | 49 |
| DRAWING CIRCLES USING THE FIVE | |
| COORDINATE ENTRY METHODS | 51 |
| CIRCLE | 51 |
| POLAR TRACKING | |
| AND POLAR SNAP | 53 |

| | | | |
|---|-----------|---|------------|
| Polar Tracking | 54 | CHAPTER 6. | |
| Polar Tracking with | | BASIC DRAWING SETUP | 87 |
| Direct Distance Entry | 55 | STEPS FOR BASIC DRAWING SETUP .. | 88 |
| Polar Tracking Override | 55 | STARTUP OPTIONS | 88 |
| Polar Snap | 55 | DRAWING SETUP OPTIONS | 89 |
| DRAWING LINES USING POLAR | | <i>Start from Scratch</i> | 89 |
| TRACKING AND POLAR SNAP | 56 | <i>Template</i> | 90 |
| Using Polar Tracking and Grid Snap .. | 56 | Table of <i>Start from Scratch</i> | |
| Using Polar Tracking and Polar Snap .. | 58 | <i>Imperial</i> Settings (ACAD.DWT) | 90 |
| Using Polar Tracking and | | Table of <i>Start from Scratch</i> | |
| Direct Distance Entry | 59 | <i>Metric</i> Settings (ACADISO.DWT) ... | 91 |
| CHAPTER EXERCISES | 60 | <i>Wizard</i> | 91 |
| CHAPTER 4. | | <i>Quick Setup Wizard</i> | 91 |
| SELECTION SETS | 63 | <i>Advanced Setup Wizard</i> | 92 |
| MODIFY COMMAND CONCEPTS | 64 | SETUP COMMANDS | 93 |
| SELECTION SETS | 64 | UNITS | 93 |
| Accessing Selection Set Options | 65 | Keyboard Input of <i>Units</i> Values | 95 |
| Selection Set Options | 65 | LIMITS | 95 |
| Ctrl+Left Button (Object Cycling) | 69 | SNAP | 97 |
| SELECT | 70 | GRID | 99 |
| NOUN/VERB SYNTAX | 70 | DSETTINGS | 100 |
| SELECTION SETS PRACTICE | 70 | Using <i>Snap</i> and Grid | 100 |
| Using <i>Erase</i> | 71 | INTRODUCTION TO LAYOUTS | |
| ERASE | 71 | AND PRINTING | 100 |
| Using <i>Move</i> | 72 | <i>Model</i> Tab and Layout Tabs | 101 |
| MOVE | 72 | Why Set Up Layouts Before Drawing? .. | 103 |
| Using <i>Copy</i> | 73 | Printing and Plotting | 103 |
| COPY | 73 | Setting Layout Options | |
| Noun/Verb Command | | and Plot Options | 104 |
| Syntax Practice | 74 | CHAPTER EXERCISES | 105 |
| CHAPTER EXERCISES | 75 | CHAPTER 7. | |
| CHAPTER 5. | | OBJECT SNAP AND | |
| HELPFUL COMMANDS | 77 | OBJECT SNAP TRACKING | 109 |
| CONCEPTS | 78 | CAD ACCURACY | 110 |
| HELP | 78 | OBJECT SNAP | 110 |
| ASSIST | 81 | OBJECT SNAP MODES | 111 |
| OOPS | 82 | Acquisition Object Snap Modes | 115 |
| U 82 | 82 | OSNAP SINGLE POINT SELECTION .. | 117 |
| UNDO | 82 | OSNAP RUNNING MODE | 119 |
| REDO | 83 | Running Object Snap | 119 |
| MREDO | 84 | Accessing Running Object Snap | 119 |
| REGEN | 84 | Running Object Snap Toggle | 120 |
| CHAPTER EXERCISES | 85 | Object Snap Cycling | 120 |
| | | OBJECT SNAP TRACKING | 120 |
| | | To Use Object Snap Tracking | 122 |
| | | Object Snap Tracking | |
| | | with Polar Tracking | 122 |

| | | | |
|---|-----|---|-----|
| Object Snap Tracking Settings | 123 | CHAPTER 10. | |
| OSNAP APPLICATIONS | 124 | VIEWING COMMANDS | 187 |
| OSNAP PRACTICE | 124 | CONCEPTS | 188 |
| Single Point Selection Mode | 124 | ZOOM AND PAN WITH THE MOUSE | |
| Running Object Snap Mode | 126 | WHEEL | 189 |
| Object Snap Tracking | 127 | Zoom and Pan | 189 |
| CHAPTER EXERCISES | 128 | Zoom with the Mouse Wheel | 189 |
| CHAPTER 8. | | Pan with the Mouse Wheel | |
| DRAW COMMANDS I | 135 | or Third Button | 190 |
| CONCEPTS | 136 | COMMANDS | 190 |
| Draw Commands— | | ZOOM | 190 |
| Simple and Complex | 136 | PAN | 194 |
| Draw Command Access | 136 | Scroll Bars | 196 |
| Coordinate Entry | 137 | VIEW | 196 |
| COMMANDS | 137 | UCSICON | 198 |
| LINE | 137 | SYSWINDOWS | 199 |
| CIRCLE | 138 | VPORTS | 200 |
| ARC | 140 | CHAPTER EXERCISES | 202 |
| Use Arcs or Circles? | 144 | | |
| POINT | 145 | CHAPTER 11. | |
| DDPTYPE | 145 | LAYERS AND OBJECT PROPERTIES | 207 |
| PLINE | 146 | CONCEPTS | 208 |
| Pline Arc Segments | 148 | Assigning Colors, Linetypes, | |
| CHAPTER EXERCISES | 148 | and Lineweights | 208 |
| | | Object Properties | 209 |
| CHAPTER 9. | | LAYERS AND LAYER | |
| MODIFY COMMANDS I | 153 | PROPERTIES CONTROLS | 209 |
| CONCEPTS | 154 | Layer Control Drop-Down List | 209 |
| COMMANDS | 155 | LAYER | 210 |
| ERASE | 155 | Color, Linetype, Lineweight, | |
| MOVE | 155 | and Other Properties | 212 |
| ROTATE | 157 | Displaying an Object's Properties | |
| SCALE | 158 | and Visibility Settings | 214 |
| STRETCH | 159 | Make Object's Layer Current | 215 |
| LENGTHEN | 160 | LAYERP | 215 |
| TRIM | 162 | OBJECT-SPECIFIC | |
| EXTEND | 163 | PROPERTIES CONTROLS | 216 |
| Trim and Extend Shift-Select Option | 164 | LINETYPE | 216 |
| BREAK | 164 | Linetype Control Drop-Down List | 216 |
| COPY | 167 | LWEIGHT | 217 |
| MIRROR | 168 | Lineweight Control Drop-Down List | 217 |
| OFFSET | 169 | COLOR | 218 |
| ARRAY | 170 | Color Control Drop-Down List | 218 |
| FILLET | 173 | CONTROLLING LINETYPE SCALE | 219 |
| CHAMFER | 176 | LTSCALE | 219 |
| CHAPTER EXERCISES | 177 | CELTSCALE | 220 |
| | | CHANGING OBJECT PROPERTIES | 221 |
| | | Object Properties Toolbar | 221 |

| | | | |
|--|-----|---|-----|
| PROPERTIES | 222 | USING VIEWPORTS IN PAPER SPACE | 254 |
| MATCHPROP | 223 | VPORTS | 254 |
| CHAPTER EXERCISES | 224 | PSPACE | 257 |
| | | MSPACE | 257 |
| CHAPTER 12. | | MODEL | 258 |
| ADVANCED DRAWING SETUP | 229 | Scaling the Display of | |
| CONCEPTS | 230 | Viewport Geometry | 258 |
| STEPS FOR DRAWING SETUP | 230 | Locking Viewport Geometry | 260 |
| 1. Set <i>Units</i> | 230 | Linetype Scale | |
| 2. Set <i>Limits</i> | 231 | in Viewports— <i>PSLTSCALE</i> | 260 |
| Drawing Scale Factor | 231 | CHAPTER EXERCISES | 261 |
| 3. Set <i>Snap</i> | 232 | | |
| 4. Set <i>Grid</i> | 233 | CHAPTER 14. | |
| 5. Set the <i>LTSCALE</i> and <i>PSLTSCALE</i> | 233 | PRINTING AND PLOTTING | 269 |
| 6. Create <i>Layers</i> ; Assign <i>Linetypes</i> , | | CONCEPTS | 270 |
| <i>Lineweights</i> , and <i>Colors</i> | 233 | TYPICAL STEPS TO PLOTTING | 270 |
| 7. Create <i>Text Styles</i> | 233 | USING THE <i>PLOT</i> AND <i>PAGE</i> | |
| 8. Create Dimension Styles | 234 | <i>SETUP</i> DIALOG BOXES | 271 |
| 9. Activate a <i>Layout</i> Tab, Set the | | <i>PLOT</i> | 271 |
| Plot Device, and Create a Viewport | 234 | <i>Plot Device</i> Tab | 272 |
| 10. Create a Title Block and Border | 234 | <i>Plot Settings</i> Tab | 273 |
| USING AND CREATING | | - <i>PLOT</i> | 277 |
| TEMPLATE DRAWINGS | 234 | <i>PAGESETUP</i> | 277 |
| Using Template Drawings | 234 | Should You Use the <i>Plot</i> Dialog Box | |
| Creating Template Drawings | 235 | or <i>Page Setup</i> Dialog Box? | 278 |
| Additional Advanced Drawing | | <i>PREVIEW</i> | 278 |
| Setup Concepts | 236 | PLOTTING TO SCALE | 279 |
| CHAPTER EXERCISES | 236 | Standard Paper Sizes | 279 |
| | | Calculating the Drawing | |
| CHAPTER 13. | | Scale Factor | 280 |
| LAYOUTS AND VIEWPORTS | 239 | Guidelines for Plotting the | |
| CONCEPTS | 240 | <i>Model</i> Tab to Scale | 280 |
| Paper Space and Model Space | 240 | Guidelines for Plotting | |
| Layouts | 240 | <i>Layouts</i> to Scale | 281 |
| Viewports | 241 | TABLES OF LIMITS SETTINGS | 282 |
| Layouts and Viewports Example | 243 | Mechanical Table of <i>Limits</i> Settings | 283 |
| Guidelines for Using Layouts | | Architectural Table of <i>Limits</i> Settings | 284 |
| and Viewports | 246 | Metric Table of <i>Limits</i> Settings | |
| CREATING AND SETTING | | for Metric (ISO) Sheet Sizes | 285 |
| UP LAYOUTS | 247 | Metric Table of <i>Limits</i> Settings | |
| <i>LAYOUTWIZARD</i> | 247 | for ANSI Sheet Sizes | 286 |
| <i>LAYOUT</i> | 249 | Civil Table of <i>Limits</i> Settings | 287 |
| Inserting Layouts with | | Examples for Plotting to Scale | 288 |
| AutoCAD DesignCenter | 251 | CONFIGURING PLOTTERS | |
| Setting up the Layout | 251 | AND PRINTERS | 289 |
| <i>OPTIONS</i> | 252 | <i>PLOTTERMANAGER</i> | 289 |
| <i>PAGESETUP</i> | 253 | <i>Add-A-Plotter Wizard</i> | 289 |
| | | CHAPTER EXERCISES | 290 |